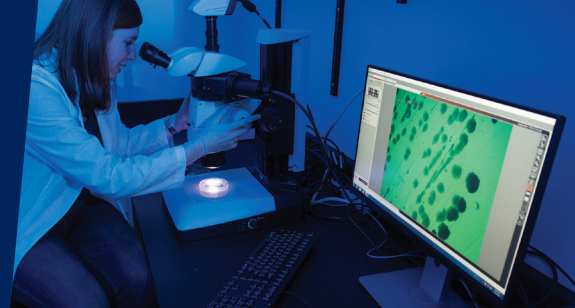


Chemistry-Related Doctoral Programs at Middle Tennessee State University



Molecular Biosciences, Ph.D.

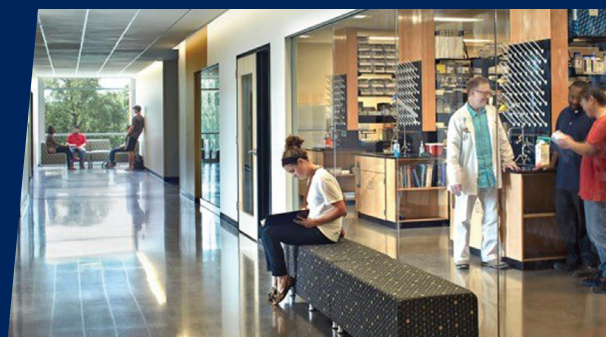
mtsu.edu/programs/molecular-biosciences-phd

65 credit hours, 4- to 5-year program

Prepares students to study problems of biological relevance at the molecular level using chemical, biological, and mathematical approaches in a research-oriented program and a collaborative environment.

Application deadline: January 31 each year for fall admission

Associated faculty: Kevin Bicker, Ph.D.; Charles Chusuei, Ph.D.; Keying Ding, Ph.D.; Scott Handy, Ph.D.; Justin Miller, Ph.D.; Chengshan Wang, Ph.D.; Mengliang Zhang, Ph.D.



Computational and Data Science, Ph.D.

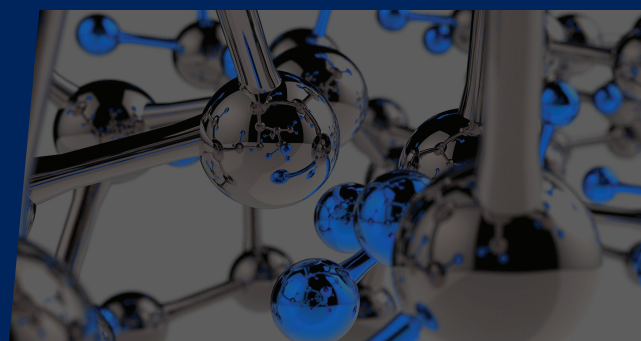
mtsu.edu/programs/computational-science-phd

72 credit hours, 4- to 5-year program

Prepares students for futures applying computational skills and methods to the biological, physical, and mathematical sciences in a research-oriented program and a collaborative environment.

Application deadline: February 15 each year for fall admission

Associated faculty: Jing Kong, Ph.D.; Preston MacDougall, Ph.D.; Anatoliy Volkov, Ph.D.



Mathematics and Science Education, Ph.D.

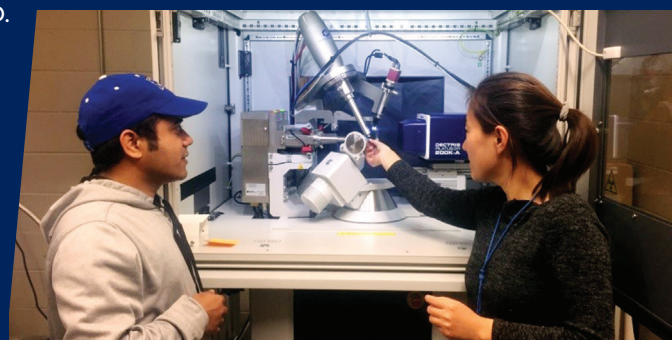
mtsu.edu/programs/math-science-education-phd

60 credit hours, 4- to 5-year program

Prepares students to perform, evaluate, and integrate research in mathematics and science education, with a particular focus in Chemistry Education at the college and K-12 levels and opportunities to study how students learn chemistry, where they struggle, and what (and how) they develop common misconceptions.

Application deadline: January 15 each year for fall admission

Associated faculty: Amy Phelps, Ph.D.; Gregory Rushton, Ph.D.; Michael Sanger, Ph.D.; Scott Handy, Ph.D.



General Information

All three doctoral programs:

- Require satisfactory GRE
- Require at least a 3.0 GPA
- Teaching assistantships include stipend, and tuition waiver



Chemistry



**MIDDLE
TENNESSEE**
STATE UNIVERSITY.

I AM *true* **BLUE**

0622-0728 / Middle Tennessee State University does not discriminate against students, employees, or applicants for admission or employment on the basis of race, color, religion, creed, national origin, sex, sexual orientation, gender identity/expression, disability, age, status as a protected veteran, genetic information, or any other legally protected class with respect to all employment, programs, and activities sponsored by MTSU. The Assistant to the President for Institutional Equity and Compliance has been designated to handle inquiries regarding the non-discrimination policies and can be reached at Cope Administration Building 116, 1301 East Main Street, Murfreesboro, TN 37132; Christy.Sigler@mtsu.edu; or 615-898-2185. The MTSU policy on non-discrimination can be found at mtsu.edu/iec.

